





A history of intellectual capital

About us

As a fully integrated firm, Chaccour Construction is an ideal partner to execute a single-source design-build contract. We combine architectural, engineering and construction management services to deliver a streamlined client experience. Founded in 1947 by the engineer Dimitri E. Chaccour and eventually managed by the award- winning architect & engineer Ghassan D.Chaccour in 1970.

In 2005, architects Ziad Chaccour & Marianne Chaccour developed Chaccour Construction an architecture, engineering and construction management firm focused on innovative design and combined consultancy services reflecting a renewed vision and aspiration.

This family-owned business is based on experience, creativity and competence which contributed to broaden the company's reach beyond the Lebanese territory and integrate it into the global market, i.e. France, UK, Nigeria, Angola, Iraq, UAE, KSA, etc. We provide a wide variety of architecture and engineering design services, ranging from the micro level of furniture to the macro level of towns:

Residential and leisure villages, high-rise buildings, mixed-use projects, office buildings, commercial complexes, shopping malls, tourism and leisure recreation complexes, hospitals, healthcare, educational and other public buildings.

CHACCOUR CONSTRUCTION

LEBANON - KASLIK - AL MOUDABBER CENTER, Block B -2nd Floor- P.O. Box: 401 Zouk Mikael
Tel : +961 9 210 893 - +961 9 211 401 Mob : +961 3 688 898 - +961 70 100 080 Fax: +961 9 211 410
Email : info@chaccour-construction.com Website : www.chaccour-construction.com



Climbing the stairs of success since 1947

Our Awards

We're honored to be honored.

At Chaccour Construction, we are proud of the awards we won and the recognition we gained confirming the values and hard work of our entire team since we started our company.

- Paris Nov 2007
30th international Trophy for Technology and Quality
- Paris Mar 2008
Golden Award for Technology and Quality
- Madrid Jul 2008
20th international Construction Award
- Madrid Sep 2008
22nd international Europe Award for Quality
- Madrid Mar 2002
30th international Trophy for Quality
- Madrid Mar 2002
30th international Golden Award for Quality
- Lebanon Jun 2015
Recognition from Tele Liban
- Canada Jun 2008
Recognition from the Canadian house of commons
- Madrid Jun 1996
8th international construction Award

CHACCOUR CONSTRUCTION

LEBANON - KASLIK - AL MOUDABBER CENTER, Block B -2nd Floor- P.O. Box: 401 Zouk Mikael
Tel : +961 9 210 893 - +961 9 211 401 Mob : +961 3 688 898 - +961 70 100 080 Fax: +961 9 211 410
Email : info@chaccour-construction.com Website : www.chaccour-construction.com



No recipe is complete without every single ingredient



Architecture



Structural & Civil Engineer



Electro-mechanical Engineering



Waste Water Treatment



Construction Management



Planning & Urban Design



Interior Architecture



Landscape Architecture



Graphic Rendering



Contracting

CHACCOUR CONSTRUCTION

LEBANON - KASLIK - AL MOUDABBER CENTER, Block B -2nd Floor- P.O. Box: 401 Zouk Mikael

Tel : +961 9 210 893 - +961 9 211 401 Mob : +961 3 688 898 - +961 70 100 080 Fax: +961 9 211 410

Email : info@chaccour-construction.com Website : www.chaccour-construction.com



Architecture

- Architecture

- Structural & Civil Engineering
- Electro-mechanical Engineering
- Waste Water Treatment
- Construction Management
- Planning & Urban Design
- Interior Architecture
- Landscape Architecture
- Graphic Rendering
- Contracting

At Chaccour Construction, a talented range of professionals work together to deliver projects on time, on budget, and with a high degree of personal attention. We believe that design is an evolutionary process where client and architect learn from each other through frequent communication. Understanding budgets, schedules, goals and ideals, we pursue the optimum balance of these forces in the design of buildings.

Architecture services include:

- Site and Building Evaluations Feasibility Studies
- Programming and Planning
- Conceptual Design
- Architectural Design and details
- Sustainable Design
- Construction Drawings
- Tender documents (Specifications, B.O.Q...)
- Supervision or Construction Management

CHACCOUR CONSTRUCTION

LEBANON - KASLIK - AL MOUDABBER CENTER, Block B -2nd Floor- P.O. Box: 401 Zouk Mikael
Tel : +961 9 210 893 - +961 9 211 401 Mob : +961 3 688 898 - +961 70 100 080 Fax: +961 9 211 410
Email : info@chaccour-construction.com Website : www.chaccour-construction.com



Structural & Civil Engineer

- Architecture

- **Structural & Civil Engineering**

- Electro-mechanical Engineering

- Waste Water Treatment

- Construction Management

- Planning & Urban Design

- Interior Architecture

- Landscape Architecture

- Graphic Rendering

- Contracting

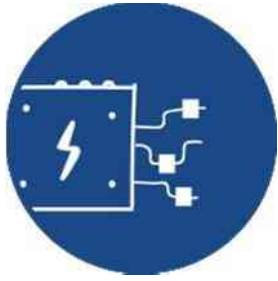
Pioneers in the challenges of innovative projects, our engineers promote the solid structural backbone of the project and determine how to maximize the benefit of the material and how to cut down the construction cost.

Structural and Civil Engineering services include:

- Structural Systems Studies
- Foundation Studies
- Seismic Evaluations (Design, Calculations)
- Feasibility Studies
- Construction Drawings and Details
- Tender Documents
- Supervision or construction management

CHACCOUR CONSTRUCTION

LEBANON - KASLIK - AL MOUDABBER CENTER, Block B -2nd Floor- P.O. Box: 401 Zouk Mikael
Tel : +961 9 210 893 - +961 9 211 401 Mob : +961 3 688 898 - +961 70 100 080 Fax: +961 9 211 410
Email : info@chaccour-construction.com Website : www.chaccour-construction.com



Electro-mechanical Engineering

- Architecture
- Structural & Civil Engineering
- **Electro-mechanical Engineering**
- Waste Water Treatment
- Construction Management
- Planning & Urban Design
- Interior Architecture
- Landscape Architecture
- Graphic Rendering
- Contracting

In full coordination with our architects, our electromechanical engineers study and design the electrical and mechanical system providing the best alternatives for every detail of the project.

Electromechanical Engineering services include:

- Electrical design and detail drawings
- Mechanical design and detail drawings
- Air-conditioning design and detail drawings
- Water and gas supply, plumbing design and detail drawings
- Tender drawings and documents (specifications, B.O.Q...)
- Supervision or construction management

CHACCOUR CONSTRUCTION

LEBANON - KASLIK - AL MOUDABBER CENTER, Block B -2nd Floor- P.O. Box: 401 Zouk Mikael
Tel : +961 9 210 893 - +961 9 211 401 Mob : +961 3 688 898 - +961 70 100 080 Fax: +961 9 211 410
Email : info@chaccour-construction.com Website : www.chaccour-construction.com



Waste Water Treatment

- Architecture
- Structural & Civil Engineering
- Electro-mechanical Engineering
- **Waste Water Treatment**
- Construction Management
- Planning & Urban Design
- Interior Architecture
- Landscape Architecture
- Graphic Rendering
- Contracting

We have already installed hundreds of water treatment systems for a variety of projects ranging from Residential, Industrial, Hospital to urban applications between 3m3 to 250m3.

Our main activity is the assembly of prefabricated equipment in FGRP (Fiber Glass Reinforced Polyester) for urban and industrial wastewater treatment.

We produce the whole chain of treatment, from Pretreatment to Tertiary treatment. Consequently, we offer treatment plants from 10 EH to 3000 EH, Cesspools, Hydrocarbon and grease separators, Pumping stations, Tanks, Rainwater harvesting, etc.



Construction Management

- Architecture
- Structural & Civil Engineering
- Electro-mechanical Engineering
- Waste Water Treatment
- **Construction Management**
- Planning & Urban Design
- Interior Architecture
- Landscape Architecture
- Graphic Rendering
- Contracting

The primary objective of the firm's contract Construction Administration function is to ensure completion of work the way the client wants it – as scheduled and as budgeted.

Our construction administrators evaluate the quality of the work to verify that it meets the level required by clients; in addition, they monitor the contractor's progress to ensure that the project remains on time and on budget.

CHACCOUR CONSTRUCTION

LEBANON - KASLIK - AL MOUDABBER CENTER, Block B -2nd Floor- P.O. Box: 401 Zouk Mikael
Tel : +961 9 210 893 - +961 9 211 401 Mob : +961 3 688 898 - +961 70 100 080 Fax: +961 9 211 410
Email : info@chaccour-construction.com Website : www.chaccour-construction.com



Planning & Urban Design

- Architecture
- Structural & Civil Engineering
- Electro-mechanical Engineering
- Waste Water Treatment
- Construction Management
- **Planning & Urban Design**
- Interior Architecture
- Landscape Architecture
- Graphic Rendering
- Contracting

In shaping and planning environment, our architects systematically explore the different aspects of every site to get the best combination between site and project, thus adapting it to the residents' needs.

Functionality and character go hand in hand with enhancing, protecting, and managing the natural environment.

Planning and Urban Design services include:

- Site Selection Studies
- Master Planning
- Urban Design
- Community and Town Planning
- Downtown Redevelopment
- Waterfront Planning
- Design Guidelines
- Land Use and Zoning Analyses

CHACCOUR CONSTRUCTION

LEBANON - KASLIK - AL MOUDABBER CENTER, Block B -2nd Floor- P.O. Box: 401 Zouk Mikael
Tel : +961 9 210 893 - +961 9 211 401 Mob : +961 3 688 898 - +961 70 100 080 Fax: +961 9 211 410
Email : info@chaccour-construction.com Website : www.chaccour-construction.com



Interior Architecture

- Architecture
- Structural & Civil Engineering
- Electro-mechanical Engineering
- Waste Water Treatment
- Construction Management
- Planning & Urban Design
- **Interior Architecture**
- Landscape Architecture
- Graphic Rendering
- Contracting

Inspired by the client's personality and sense of aesthetics, our specialists embody the individual's lifestyle and preferences.

They incorporate them subtly with the functional musts, and innovative materials, thus investing them professionally with a personalized touch.

Interior Architecture services include:

- Space Planning
- Interior Design
- Execution Drawings
- Purchasing
- Artwork and Materials Selection
- Design Guidelines
- Facility Management
- Supervision or Construction Management



Landscape Architecture

- Architecture
- Structural & Civil Engineering
- Electro-mechanical Engineering
- Waste Water Treatment
- Construction Management
- Planning & Urban Design
- Interior Architecture
- **Landscape Architecture**
- Graphic Rendering
- Contracting

When tackling the natural, environmental, socio-cultural, and legal constraints, our architects use their knowledge and skills to accomplish the required technical and implementation drawings.

Landscape Architecture services include:

- Site Design
- Landscape Design
- Hardscape Design
- Water Feature Design
- Irrigation Systems Design
- Plant and Materials Selection
- Artwork and Sculpture Selection



Graphic Rendering

- Architecture
- Structural & Civil Engineering
- Electro-mechanical Engineering
- Waste Water Treatment
- Construction Management
- Planning & Urban Design
- Interior Architecture
- Landscape Architecture
- **Graphic Rendering**
- Contracting

For the enrichment of our graphic rendering, visualizing systems and skills are used. 3D is used for the recreation of walk-in tours, stills and to display the final project in its natural setting.

Graphic Rendering services include:

- 3D Computer Modeling
- Animation
- Renderings
- Multimedia
- Print Design/Brochures



Contracting

- Architecture
- Structural & Civil Engineering
- Electro-mechanical Engineering
- Waste Water Treatment
- Construction Management
- Planning & Urban Design
- Interior Architecture
- Landscape Architecture
- Graphic Rendering
- **Contracting**

We ensure the client with the highest standards of quality at the most competitive prices while providing turnkey construction projects.

Our experienced construction teams manage all phases of construction from demolition to architectural finishing and interior decoration.

Construction services include:

- Demolition
- Earth Moving
- Concrete
- Electro-Mechanical
- Architectural Finishing
- Interior Decoration
- Roads and Infrastructure



Portfolio

ARCHITECTURE PROJECTS:

PROJECT	LOCATION	CATEGORY	AREA
Yenagoa Peace Park	Nigeria	Sports & Leisure	40.000 m²
Aqua Ibom Water Park and Dry Park	Nigeria	Sports & Leisure	45.000 m²
Akwa Ibom Complex - Hotel, Convention center , Mall	Uyo - Nigeria	Sports & Leisure	80.000 m²
Cite Du Basketeur	Ain Saadeh, Lebanon	Sports & Leisure	20.000 m²
Convention Center	Uyo - Nigeria	Sports & Leisure	16.000 m²
Ibom Tropicana Cineplex	Uyo - Nigeria	Sports & Leisure	5.000 m²
Nautical Stadium of “Epinay sur-seine ” in collaboration with bureau Kostanjevac	France	Sports & Leisure	110.000 m²
Lebanese Federation of Basketball- Basketball city	Ain Saadeh - Lebanon	Sports & Leisure	56.000 m²
Covered Swimming Pool College Saints Coeurs	Kfarehbab - Lebanon	Sports & Leisure	3.500 m²
Gymnasium College Saints Coeurs	Kfarehbab - Lebanon	Sports & Leisure	6.000 m²
Swimming Pool (1) Semi-Olympic with annexes Mont La Salle College	Lebanon	Sports & Leisure	4.500 m²
Children Oasis Mont la Salle College	Lebanon	Sports & Leisure	2.500 m²
Olympic Stadium Mont La Salle College with a football playground	Lebanon	Sports & Leisure	15.000 m²
Nautical Palace Mont La Salle College	Lebanon	Sports & Leisure	20.000 m²
Silverbird Convention Center	Nigeria	Sports & Leisure	15.000 m²
Jounieh Hospital	Jounieh - Lebanon	Hospitals & Clinics	9.000 m²
Health Complex: Hospital, Rest house, Retirement, Medical center, Hotel, tourism, Health center	Beirut - Lebanon	Hospitals & Clinics	60.000 m²
Cortbawi Hospital - Physiotherapy, Hydrotherapy, Electrotherapy and Orthopedic sugery	SS - CC Adma Lebanon	Hospitals & Clinics	17.000 m²
Socio-Medical & Technical complexes for the Cortbawi institute - Hospital for handicaps	Daher El Wahch	Hospitals & Clinics	32.000 m²
SAQR Hospital	Ras El Khayma - U.A.E	Hospitals & Clinics	45.000 m²
Dubai German Hospital - 300 beds	Dubai	Hospitals & Clinics	45.000 m²
UN-Irish Field Hospital	Southern - Lebanon	Hospitals & Clinics	1.000 m²
El Abiad 952	Dbayeh - Lebanon	Commercial & Business	16.000 m²
Abuja Downtown - Residential Commercial & Leisure complex	Abuja – Nigeria	Commercial & Business	268.000 m²
lee France	France	Commercial & Business	6.000 m²
Yenagoa Megapark Mall	Bayelsa State - Nigeria	Commercial & Business	18.000 m²
Tele Liban	Beirut - Lebanon	Commercial & Business	6.000 m²
Silverbird Treasure Cove Mall - Entertainment & Commercial Center, Mall, 23 Cinemas	Lagos - Nigeria	Commercial & Business	60.000 m²
Moulin D'or	Lebanon	Commercial & Business	800 m²
Lekki Tv Station	Lekki - Nigeria	Commercial & Business	4.000 m²
Erbil Business Tower	Erbil	Commercial & Business	12.000 m²
Prototype Mall (More than 20 locations)- Entertainment & Commercial Center, Mall, 6 Cinemas	Nigeria	Commercial & Business	8.500 & 6.500 m²
Galaxy World Trade Center	Beirut - Lebanon	Commercial & Business	55.000 m²

PROJECT	LOCATION	CATEGORY	AREA
International Business Center I.B.C	Achrafieh - Beirut	Commercial & Business	40.000 m²
Jeddah Complex	Jeddah	Commercial & Business	200.000 m²
Abuja City Mall	Abuja – Nigeria	Commercial & Business	48.181 m²
Kaslik Etoile	Kaslik - Lebanon	Commercial & Business	10.200 m²
Abuja Commercial And Leisure Complex	Abuja – Nigeria	Commercial & Business	203.306 m²
Ecobat	Beirut - Lebanon	Commercial & Business	2.000 m²
Achrafieh Center	Beirut - Lebanon	Commercial & Business	4.300 m²
Khalil Tawil Center	Byblos - Lebanon	Commercial & Business	6.000 m²
Al Moudabber Center - Kaslik Block A & Block B	Kaslik - Lebanon	Commercial & Business	27.000 m²
Dora Gate Center	Dora - Beirut	Commercial & Business	6.000 m²
Adwan Center	Sin El Fil - Lebanon	Commercial & Business	5.000 m²
Pearl Center	Kaslik - Lebanon	Commercial & Business	7.000 m²
Lagos Deep Water Shore Base & Medical Facility	Nigeria	Ports & Heliports	16.125 m²
Villa Saad - Ain Saadeh	Beirut - Lebanon	Private Residences	3.000 m²
Hanna residence - Akkar	Akkar - Lebanon	Private Residences	2.000 m²
Faqra Chalet	Faqra - Lebanon	Private Residences	800 m²
Villa C	Fatka- Lebanon	Private Residences	600 m²
Villa Moukarem	Lebanon	Private Residences	1.400 m²
Villa Makdessi	Fatka- Lebanon	Private Residences	2.200 m²
Villa Lichaa Fatka	Fatka- Lebanon	Private Residences	2.000 m²
Villa Hany - Adma	Adma - Lebanon	Private Residences	2.000 m²
Villa Chaccour	Fatka- Lebanon	Private Residences	1.200 m²
Villa Adma 842	Adma - Lebanon	Private Residences	3.000 m²
Villa Adma 339	Adma - Lebanon	Private Residences	2.000 m²
Hanna Residence - Fatka	Fatka - Lebanon	Private Residences	3.500 m²
Sopic Adma Apartment	Adma - Lebanon	Private Residences	600 m²
Nawfal Residence - Zouk	Zouk Michael - Lebanon	Private Residences	2.000 m²
Kfarzibian 6899	Kfarzibian - Lebanon	Private Residences	1.000 m²
Ikoyi Duplex - Nigeria	Nigeria	Private Residences	1.600 m²
Bzebdine 2040	Bzebdine - Lebanon	Private Residences	1.000 m²
Zahleh Church	Zahleh - Lebanon	Religious	4.000 m²
St Charbel Church	Lebanon	Religious	1.000 m²
Ain Saadeh Church	Ain Saadeh - Lebanon	Religious	1.400 m²
Geahchan Building	Achrafieh - Lebanon	Residential Buildings	9.000 m²
Beirut Diamond 612	Achrafieh - Lebanon	Residential Buildings	9.000 m²

PROJECT	LOCATION	CATEGORY	AREA
Esla 2465	Achrafieh - Beirut	Residential Buildings	8.400 m²
Arcadis 730	Achrafieh Rmeil – Beirut	Residential Buildings	3.000 m²
Esla 524	Beirut - Lebanon	Residential Buildings	9.000 m²
House of Youth and Culture Library, Projection Room, Research Center	Zouk Michael - Lebanon	Residential Buildings	1.000 m²
Achrafieh 1222-778	Achrafieh - Beirut	Residential Buildings	6.000 m²
Esla 485	Hazmieh - Lebanon	Residential Buildings	4.000 m²
Bayo Kuku	Nigeria	Residential Buildings	9.000 m²
Ocean Breeze	Lagos - Nigeria	Residential Buildings	30.000 m²
Esla 126 - Luxurious apartments & boutiques, restaurants, coffee shops	Achrafieh - Beirut	Residential Buildings	9.000 m²
Eden Gardens 1818	Ain Saadeh - Lebanon	Residential Buildings	8.000 m²
Ramlet El Baida	Lebanon	Residential Buildings	10.500 m²
Ain Saadeh 1820	Ain Saadeh - Mount Lebanon	Residential Buildings	9.000 m²
Kornet Chehwan - 3043	Kornet chehwan – Mount Lebanon	Residential Buildings	4.000 m²
Ikoyi - Luxurious apartments & a private residence	Ikoyi - Nigeria	Residential Buildings	18.000 m²
Esla Sin El Fil	Sin El Fil - Lebanon	Residential Buildings	8.400 m²
Ballouneh 1363	Ballouneh – Mount Lebanon	Residential Buildings	2.000 m²
Queen's Drive	Lagos – Nigeria	Residential Buildings	9.000 m²
Golden Sands	Lagos – Nigeria	Residential Buildings	27.500 m²
Lagos Residences	Lagos – Nigeria	Residential Buildings	18.000 m²
Roof Bay Village - Adma	Fatka- Lebanon	Residential Villages	14.000 m²
Jasmine Valley - Ain Dara	Ain Dara - Lebanon	Residential Villages	40.000 m²
Ain Dara Resort	Ain Dara - Lebanon	Residential Villages	32.000 m²
Al Rawabi Village - 230 Apartments	Dbayeh - Lebanon	Residential Villages	30.000 m²
Al Manar Village - 245 Touristic & Residential Lodgings	Raboueh - Lebanon	Residential Villages	60.000 m²
Abuja Ambassadorial Galaxy - 400 Apartments	Abuja – Nigeria	Residential Villages	205.000 m²
New Ain Saadeh Village - 600 Apartments	Ain Saadeh - Lebanon	Residential Villages	146.000 m²
Stayhat Adma Village (42 Villas)	Adma - Lebanon	Residential Villages	28.600 m²
Ponticelli France - Port Hartcourt (Compound for Engineers)	Port Hartcourt - Nigeria	Residential Villages	9.000 m²
Ocean Breeze	Lagos - Nigeria	Residential Villages	18.000 m²
Monteverde Village 2202	Monteverde - Lebanon	Residential Villages	58.000 m²
Monte Byblos Village	Byblos - Lebanon	Residential Villages	490.000 m²
Intertransport Center S.P.A - Interland Angloa 672 Housing Units	Interland - Angola	Residential Villages	82.000 m²
Elf Total Compound - New Village , Port Hartcourt	Port Hartcourt Nigeria	Residential Villages	140.000 m²
Daychounieh 130-131	Daychounieh - Mount Lebanon	Residential Villages	71.000 m²
New Kfarehbab Village	Kfarehbab - Lebanon	Residential Villages	32.000 m²

PROJECT	LOCATION	CATEGORY	AREA
Bens Tower		Towers & Hotels	154.000 m²
Stratosphere Hotel	Abuja	Towers & Hotels	180.000 m²
Lebanese Expatriates' House	Beirut - Lebanon	Towers & Hotels	40.000 m²
Erbil Business Tower	Erbil	Towers & Hotels	12.000 m²
Hyatt Place Hotel - Nigeria- IBOM Tropicana , 5* Hotels , 230 Rooms	Nigeria	Towers & Hotels	30.000 m²
Hyatt Abuja Hotel - 64 Stories , 5* Hotel & Luxurious apartments	Abuja Stratosphere - Nigeria	Towers & Hotels	156.000 m²
Victoria Island Business Tower	Victoria Island - Lagos	Towers & Hotels	24.000 m²
Monte Byblos Hotel -	Byblos - Lebanon	Towers & Hotels	20.000 m²
Business Suites Hotel - International Business Center Project	Achrafieh - Lebanon	Towers & Hotels	12.000 m²
International Business Tower - 80 Floors	Dubai	Towers & Hotels	200.000 m²
Asaba World Hotel - 5* Hotel , 200 Rooms	Nigeria	Towers & Hotels	30.000 m²
Abuja Down Town - 5* Hotel	Nigeria	Towers & Hotels	20.000 m²
Tamer Land Hotel	Faraya - Lebanon	Towers & Hotels	6.000 m²
Le Parrain Hotel	Faraya - Lebanon	Towers & Hotels	15.000 m²
Century Park Hotel	Kaslik - Lebanon	Towers & Hotels	27.000 m²
Verbus System Hotel	Calabar - Nigeria	Towers & Hotels	26.000 m²
Treasure Cove Hotel (Family Hotel)	Lagos - Nigeria	Towers & Hotels	23 000 m²
Showtime Silverbird Hotel	Port Harcourt – Rivers State	Towers & Hotels	20.000 m²
Mouka Twin Towers	Lagos - Nigeria	Towers & Hotels	18.000 m²
Jeddah Towers	Saudi Arabia	Towers & Hotels	140.000 m²
Ibom Tropicana Hotel	Uyo - nigeria	Towers & Hotels	30 000 m²
Hyatt Place Hotel	UYO state	Towers & Hotels	180.000 m²
The Stratosphere	Abuja	Towers & Hotels	140.000 m²
Nursery School 'Soeurs Antonines'	Bhamdoun - Lebanon	Education	2.000 m²
Complementary School 'Soeurs Antonines'	Bhamdoun - Lebanon	Education	4.000 m²
SS-CC-Cortbawi - Institute - Hotel Management School & Faculty	Adma - Lebanon	Education	3.600 m²
Technical and Professional School "Federation of Keserwan municipalities"	Jouret El Termous - Lebanon	Education	9.000 m²
Mont la Salle College - Extension for Children Leisure , Kindergarden , Sport Palace	Ain Saadeh - Lebanon	Education	3.000 m²
Extension of College des Saints Coeurs	Kfarehbab - Lebanon	Education	15.541 m²
Physical Medicine Faculty Cortbawi	Adma - Lebanon	Education	30.000 m²
Technical School Cortbawi	Adma - Lebanon	Education	25.000 m²
Two Prefabrication Factories (Concrete Panels System)	Ras El Khaymeh - U.A.E	Factories	12.000 m²
Gaylani Plastic	Baghdad - Iraq	Factories	20.000 m²
Industrial Complex for Tiles, Polyurethane, Ducts, Wood	Ras El Khaymeh - U.A.E	Factories	4.000 m²
Claudius Nasr Steel Factory	Kfarchima - Lebanon	Factories	10.500 m²

PROJECT	LOCATION	CATEGORY	AREA
Chehab Factory	Debbieh - Lebanon	Factories	11.000 m²
Tyrolite Factory	Debbieh - Lebanon	Factories	2.000 m²
Various Factory	Debbieh - Lebanon	Factories	5.000 m²
Convertex Factory	Naameh - Lebanon	Factories	13.000 m²
Fares Farm	Chouf - Lebanon	Farms	3.000 m²
Abi Nader Farm	Zebdine - Lebanon	Farms	8.000 m²
Technical School	Tripoli - Lebanon	Rehabilitation	9.000 m²
Technical School	Ajaltoun - Lebanon	Rehabilitation	21.000 m²
Technical School	Douma - Lebanon	Rehabilitation	7.000 m²
Technical School	Batroun - Lebanon	Rehabilitation	22.000 m²
Technical School	Deir Ammar - Lebanon	Rehabilitation	8.000 m²
Technical School	Zgharta - Lebanon	Rehabilitation	6.000 m²
Technical school	Daher El Wahch - Lebanon	Rehabilitation	32.000 m²
Socio-Medical and Technical Complex- Cortbawi Institute	Adma - Lebanon	Rehabilitation	41.000 m²
Sagesse Scholastic Complex	Hadath - Lebanon	Rehabilitation	26.000 m²
Studies Of The Fuel Tanks For The Cement Factory - C/O Nasr Factory	Chekka - Lebanon	Metallic Constructions	6.000 m²
Tyrolite Factory And Mechanical Workshop	Debbieh - Lebanon	Metallic Constructions	3.000 m²
Claudius Nasr factory	Kfarchima - Lebanon	Metallic Constructions	10.500 m²
Office Buildings- Metallic structure- Facades in precast reinforced concrete	UAE	Metallic Constructions	15.000 m²
2 Prefabrications Factories	UAE	Metallic Constructions	12.000 m²
Polyurethane Factory For Insulation	UAE	Metallic Constructions	3.000 m²
Tiles factory Duct factory for A/C	Ras El Khaymeh - U.A.E	Metallic Constructions	7.000 m²

INTERIOR PROJECTS:

PROJECT	LOCATION	CATEGORY	AREA
Swimming Pool (2) Mont La Salle College	Lebanon	Interior Projects	
Dr. Arbid Plastic Surgery Clinic	Lebanon	Hospitals & Clinics	
Dubai German Hospital	Dubai	Hospitals & Clinics	
Wakim Group Dentistry	Lebanon	Hospitals & Clinics	
Design Office	Lebanon	Hotels & Offices	
Kaslik Offices	Lebanon	Hotels & Offices	
Regency Palace Hotel	Lebanon	Hotels & Offices	
Convention Center	Nigeria	Commercial & Business	
Treasure Cove Mall	Nigeria	Commercial & Business	
Ibom Tropicana Mall	Uyo - Nigeria	Commercial & Business	

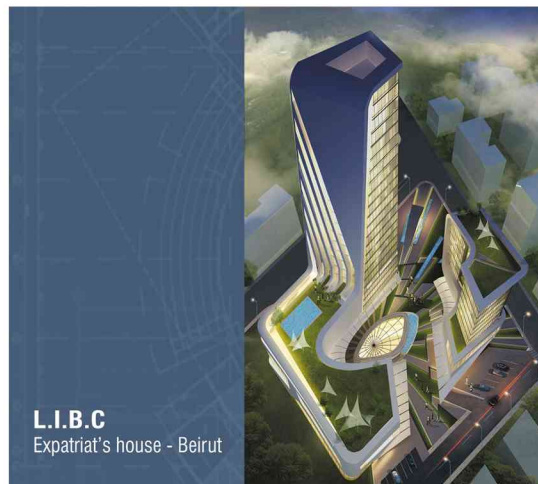
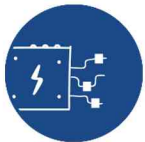
PROJECT	LOCATION	CATEGORY	AREA
Deli Shop - Jeita	Lebanon	Commercial & Business	
Dakroub House	Lebanon	Private Residences	
Beirut Apartment	Lebanon	Private Residences	
Beirut Terraces Apartment	Lebanon	Private Residences	
Villa Adma 842	Lebanon	Private Residences	
Sunken Round Sitting	Lebanon	Private Residences	
Restoration Of Raymond House Adma Lebanon	Lebanon	Private Residences	
Nassour Residence	Lebanon	Private Residences	
Makdessi Residence	Lebanon	Private Residences	
Matar Living	Lebanon	Private Residences	
Kfarzibian Villa	Lebanon	Private Residences	
Duplex - Beirut	Lebanon	Private Residences	
Living room - Faraya	Lebanon	Private Residences	
Master Bedroom - Faraya	Lebanon	Private Residences	
Rabieh Living area	Lebanon	Private Residences	
Rabieh Sitting Room	Lebanon	Private Residences	
Villa - Adma	Lebanon	Private Residences	
Chalet Faraya - Living	Lebanon	Private Residences	
Haddad Residence	Lebanon	Private Residences	
Villa C- Fataa	Lebanon	Private Residences	
Georges Abi Rizk Residence	Lebanon	Private Residences	
Dayyoub House	Lebanon	Private Residences	
Ben's House	Lebanon	Private Residences	
Vanity	Lebanon	Product Design	
Long Chair	Lebanon	Product Design	
Desk	Lebanon	Product Design	
Coffee Table	Lebanon	Product Design	
Interior Portfolio Scene 08-Pub	Lebanon	Restaurants & Pubs	
Zanini Italian Restaurant	Andrea Zanini Sorouh Tower- Abu Dhabi UAE	Restaurants & Pubs	
Zanini Burj Restaurant	Burj Khalifa - Dubai	Restaurants & Pubs	
Minis Restaurant - Bliss	Lebanon	Restaurants & Pubs	
Lebanese House Restaurant	Sorouh Tower - Abu Dhabi UAE	Restaurants & Pubs	
Tele Liban - Morning Show	Lebanon	Tv Stations & Studios	
Tele Liban - Sports News	Lebanon	Tv Stations & Studios	
Tele Liban - News Stand	Lebanon	Tv Stations & Studios	



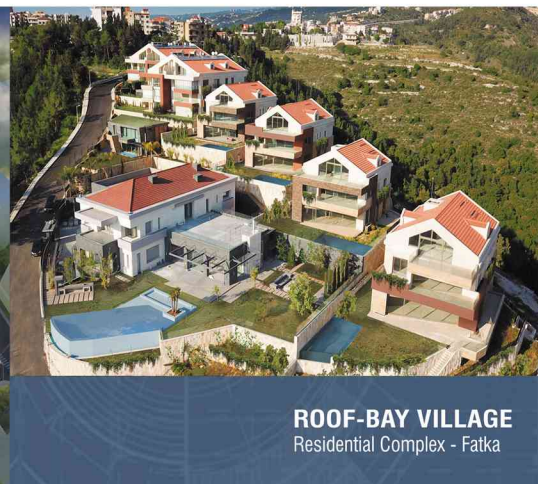
Featured



ARCHITECTURE, ENGINEERING & CONSTRUCTION MANAGEMENT



L.I.B.C
Expatriat's house - Beirut



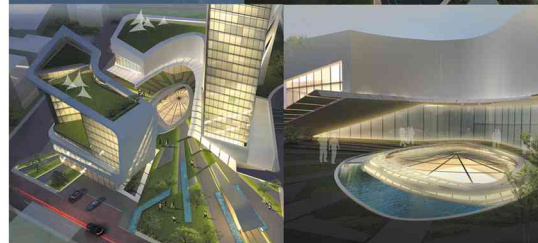
ROOF-BAY VILLAGE
Residential Complex - Fatka



ACHRAFIEH 612
Residential Tower - Beirut



STRATOSPHERE
Hyatt Regency Hotel - Abuja



DBAYEH 952
El-Abiad Commercial & Entertainment Center - Lebanon



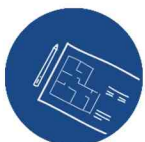
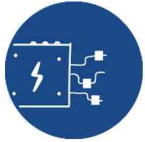
IBOM CONVENTION
Convention Center - Uyo state



VICTORIA ISLAND
Business Center



ERBIL 101
Business Center - Erbil



AIN SAADE 1818
Ain Saade - Lebanon

IBOM TROPICANA MALL
Akwa Ibom



IKOYI
Residential Building - Lagos



ESLA 126
Residential Building - Beirut



AIN SAADE 98
Private villa - Lebanon



KASSOUF BUILDING
Residential Building - Lebanon



FAQRA 6899
Private villa - Faqra Lebanon



BAYO KUKU
Residential Building - Nigeria



H.E.C ACHRAFIEH 1222
Residential Building - Achrafieh



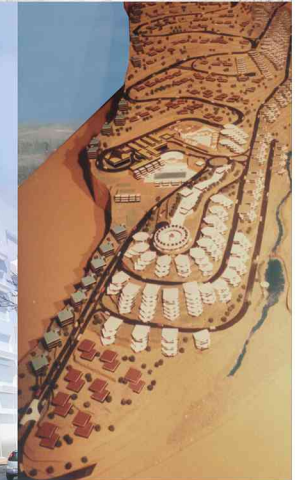
ESLA 2465
Residential Building - Beirut



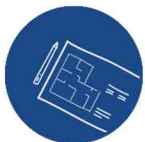
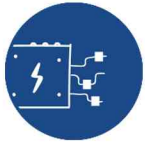
ESLA 524
Residential Tower - Beirut



ARCADIS 730
Residential Building - Lebanon



MONTE BYBLOS
Residential Complex - Lebanon



HYATT PLACE HOTEL
Hotel Uyo - Nigeria



CORTBAWI
Hospital, Technical School & City Complex - Lebanon



JASMINE VALEY
Eco Resort - Ain dara Lebanon



JEDDAH COMPLEX
Hotel, Business Center & Mall



ESLA 485
Residential Building - Hazmieh



TREASURE COVE
Mall & Leisure Complex



BASKETBALL CITY
Sports Complex - Lebanon



MALL PROTOTYPE
Nigeria



PONTICELLI
Compound - Port Harcourt



ABUJA DOWNTOWN
Mall, Residential & Leisure Complex



H.E.C AIN SAADE 1820
Residential Buildings - Lebanon



Lebanon, Kaslik Al Moudabber Center, Block B, 2nd Floor



P.O. Box 401 Zouk Mikael



T +961 9 210 839 | +961 9 211 401



M +961 3 688 898 | +961 70 100 080



F +961 9 211 410



E info@chaccour-construction.com