



## A history of intellectual capital

### About us

**As a fully integrated firm, Chaccour Construction is an ideal partner to execute a single-source design-build contract. We combine architectural, engineering and construction management services to deliver a streamlined client experience. Founded in 1947 by the engineer Dimitri E. Chaccour and eventually managed by the award-winning architect & engineer Ghassan D.Chaccour in 1970.**

In 2005, architects Ziad Chaccour & Marianne Chaccour developed Chaccour Construction an architecture, engineering and construction management firm focused on innovative design and combined consultancy services reflecting a renewed vision and aspiration.

This family-owned business is based on experience, creativity and competence which contributed to broaden the company's reach beyond the Lebanese territory and integrate it into the global market, i.e. France, UK, Nigeria, Angola, Iraq, UAE, KSA, etc. We provide a wide variety of architecture and engineering design services, ranging from the micro level of furniture to the macro level of towns:

Residential and leisure villages, high-rise buildings, mixed-use projects, office buildings, commercial complexes, shopping malls, tourism and leisure recreation complexes, hospitals, healthcare, educational and other public buildings.

#### CHACCOUR CONSTRUCTION

LEBANON - KASLIK - AL MOUDABBER CENTER, Block B -2nd Floor- P.O. Box: 401 Zouk Mikael  
Tel : +961 9 210 893 - +961 9 211 401 Mob : +961 3 688 898 - +961 70 100 080 Fax: +961 9 211 410  
Email : [info@chaccour-construction.com](mailto:info@chaccour-construction.com) Website : [www.chaccour-construction.com](http://www.chaccour-construction.com)



Climbing the stairs of success since 1947

## Our Awards

We're honored to be honored.

At Chaccour Construction, we are proud of the awards we won and the recognition we gained confirming the values and hard work of our entire team since we started our company.

- Paris Nov 2007  
**30th international Trophy for Technology and Quality**
- Paris Mar 2008  
**Golden Award for Technology and Quality**
- Madrid Jul 2008  
**20th international Construction Award**
- Madrid Sep 2008  
**22nd international Europe Award for Quality**
- Madrid Mar 2002  
**30th international Trophy for Quality**
- Madrid Mar 2002  
**30th international Golden Award for Quality**
- Lebanon Jun 2015  
**Recognition from Tele Liban**
- Canada Jun 2008  
**Recognition from the Canadian house of commons**
- Madrid Jun 1996  
**8th international construction Award**

CHACCOUR CONSTRUCTION

LEBANON - KASLIK - AL MOUDABBER CENTER, Block B -2nd Floor- P.O. Box: 401 Zouk Mikael  
Tel : +961 9 210 893 - +961 9 211 401 Mob : +961 3 688 898 - +961 70 100 080 Fax: +961 9 211 410  
Email : info@chaccour-construction.com Website : www.chaccour-construction.com

No recipe is complete without every single ingredient



Architecture



Structural & Civil Engineer



Electro-mechanical Engineering



Waste Water Treatment



Construction Management



Planning & Urban Design



Interior Architecture



Landscape Architecture



Graphic Rendering



Contracting

CHACCOUR CONSTRUCTION

LEBANON - KASLIK - AL MOUDABBER CENTER, Block B -2nd Floor- P.O. Box: 401 Zouk Mikael

Tel : +961 9 210 893 - +961 9 211 401 Mob : +961 3 688 898 - +961 70 100 080 Fax: +961 9 211 410

Email : [info@chaccour-construction.com](mailto:info@chaccour-construction.com) Website : [www.chaccour-construction.com](http://www.chaccour-construction.com)



# Architecture

---

## - Architecture

- Structural & Civil Engineering
- Electro-mechanical Engineering
- Waste Water Treatment
- Construction Management
- Planning & Urban Design
- Interior Architecture
- Landscape Architecture
- Graphic Rendering
- Contracting

At Chaccour Construction, a talented range of professionals work together to deliver projects on time, on budget, and with a high degree of personal attention. We believe that design is an evolutionary process where client and architect learn from each other through frequent communication. Understanding budgets, schedules, goals and ideals, we pursue the optimum balance of these forces in the design of buildings.

---

Architecture services include:

- Site and Building Evaluations Feasibility Studies
- Programming and Planning
- Conceptual Design
- Architectural Design and details
- Sustainable Design
- Construction Drawings
- Tender documents (Specifications, B.O.Q...)
- Supervision or Construction Management

CHACCOUR CONSTRUCTION

LEBANON - KASLIK - AL MOUDABBER CENTER, Block B -2nd Floor- P.O. Box: 401 Zouk Mikael  
Tel : +961 9 210 893 - +961 9 211 401 Mob : +961 3 688 898 - +961 70 100 080 Fax: +961 9 211 410  
Email : [info@chaccour-construction.com](mailto:info@chaccour-construction.com) Website : [www.chaccour-construction.com](http://www.chaccour-construction.com)



# Structural & Civil Engineer

---

- Architecture

## - **Structural & Civil Engineering**

- Electro-mechanical Engineering

- Waste Water Treatment

- Construction Management

- Planning & Urban Design

- Interior Architecture

- Landscape Architecture

- Graphic Rendering

- Contracting

Pioneers in the challenges of innovative projects, our engineers promote the solid structural backbone of the project and determine how to maximize the benefit of the material and how to cut down the construction cost.

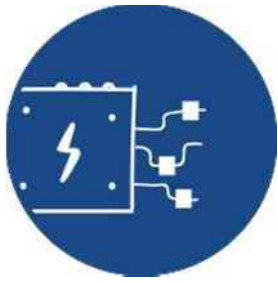
---

Structural and Civil Engineering services include:

- Structural Systems Studies
- Foundation Studies
- Seismic Evaluations (Design, Calculations)
- Feasibility Studies
- Construction Drawings and Details
- Tender Documents
- Supervision or construction management

CHACCOUR CONSTRUCTION

LEBANON - KASLIK - AL MOUDABBER CENTER, Block B -2nd Floor- P.O. Box: 401 Zouk Mikael  
Tel : +961 9 210 893 - +961 9 211 401 Mob : +961 3 688 898 - +961 70 100 080 Fax: +961 9 211 410  
Email : [info@chaccour-construction.com](mailto:info@chaccour-construction.com) Website : [www.chaccour-construction.com](http://www.chaccour-construction.com)



# Electro-mechanical Engineering

---

- Architecture
- Structural & Civil Engineering
- **Electro-mechanical Engineering**
- Waste Water Treatment
- Construction Management
- Planning & Urban Design
- Interior Architecture
- Landscape Architecture
- Graphic Rendering
- Contracting

In full coordination with our architects, our electromechanical engineers study and design the electrical and mechanical system providing the best alternatives for every detail of the project.

---

Electromechanical Engineering services include:

- Electrical design and detail drawings
- Mechanical design and detail drawings
- Air-conditioning design and detail drawings
- Water and gas supply, plumbing design and detail drawings
- Tender drawings and documents (specifications, B.O.Q...)
- Supervision or construction management

CHACCOUR CONSTRUCTION

LEBANON - KASLIK - AL MOUDABBER CENTER, Block B -2nd Floor- P.O. Box: 401 Zouk Mikael  
Tel : +961 9 210 893 - +961 9 211 401 Mob : +961 3 688 898 - +961 70 100 080 Fax: +961 9 211 410  
Email : [info@chaccour-construction.com](mailto:info@chaccour-construction.com) Website : [www.chaccour-construction.com](http://www.chaccour-construction.com)



# Waste Water Treatment

---

- Architecture
- Structural & Civil Engineering
- Electro-mechanical Engineering
- **Waste Water Treatment**
- Construction Management
- Planning & Urban Design
- Interior Architecture
- Landscape Architecture
- Graphic Rendering
- Contracting

We have already installed hundreds of water treatment systems for a variety of projects ranging from Residential, Industrial, Hospital to urban applications between 3m<sup>3</sup> to 250m<sup>3</sup>.

Our main activity is the assembly of prefabricated equipment in FGRP (Fiber Glass Reinforced Polyester) for urban and industrial wastewater treatment.

We produce the whole chain of treatment, from Pretreatment to Tertiary treatment. Consequently, we offer treatment plants from 10 EH to 3000 EH, Cesspools, Hydrocarbon and grease separators, Pumping stations, Tanks, Rainwater harvesting, etc.

CHACCOUR CONSTRUCTION

LEBANON - KASLIK - AL MOUDABBER CENTER, Block B -2nd Floor- P.O. Box: 401 Zouk Mikael  
Tel : +961 9 210 893 - +961 9 211 401 Mob : +961 3 688 898 - +961 70 100 080 Fax: +961 9 211 410  
Email : info@chaccour-construction.com Website : www.chaccour-construction.com





# Construction Management

---

- Architecture
- Structural & Civil Engineering
- Electro-mechanical Engineering
- Waste Water Treatment
- **Construction Management**
- Planning & Urban Design
- Interior Architecture
- Landscape Architecture
- Graphic Rendering
- Contracting

The primary objective of the firm's contract Construction Administration function is to ensure completion of work the way the client wants it – as scheduled and as budgeted.

Our construction administrators evaluate the quality of the work to verify that it meets the level required by clients; in addition, they monitor the contractor's progress to ensure that the project remains on time and on budget.

CHACCOUR CONSTRUCTION

LEBANON - KASLIK - AL MOUDABBER CENTER, Block B -2nd Floor- P.O. Box: 401 Zouk Mikael  
Tel : +961 9 210 893 - +961 9 211 401 Mob : +961 3 688 898 - +961 70 100 080 Fax: +961 9 211 410  
Email : [info@chaccour-construction.com](mailto:info@chaccour-construction.com) Website : [www.chaccour-construction.com](http://www.chaccour-construction.com)



# Planning & Urban Design

---

- Architecture
- Structural & Civil Engineering
- Electro-mechanical Engineering
- Waste Water Treatment
- Construction Management
- **Planning & Urban Design**
- Interior Architecture
- Landscape Architecture
- Graphic Rendering
- Contracting

In shaping and planning environment, our architects systematically explore the different aspects of every site to get the best combination between site and project, thus adapting it to the residents' needs.

Functionality and character go hand in hand with enhancing, protecting, and managing the natural environment.

---

Planning and Urban Design services include:

- Site Selection Studies
- Master Planning
- Urban Design
- Community and Town Planning
- Downtown Redevelopment
- Waterfront Planning
- Design Guidelines
- Land Use and Zoning Analyses

CHACCOUR CONSTRUCTION

LEBANON - KASLIK - AL MOUDABBER CENTER, Block B -2nd Floor- P.O. Box: 401 Zouk Mikael  
Tel : +961 9 210 893 - +961 9 211 401 Mob : +961 3 688 898 - +961 70 100 080 Fax: +961 9 211 410  
Email : [info@chaccour-construction.com](mailto:info@chaccour-construction.com) Website : [www.chaccour-construction.com](http://www.chaccour-construction.com)



# Interior Architecture

---

- Architecture
- Structural & Civil Engineering
- Electro-mechanical Engineering
- Waste Water Treatment
- Construction Management
- Planning & Urban Design
- **Interior Architecture**
- Landscape Architecture
- Graphic Rendering
- Contracting

Inspired by the client's personality and sense of aesthetics, our specialists embody the individual's lifestyle and preferences.

They incorporate them subtly with the functional musts, and innovative materials, thus investing them professionally with a personalized touch.

---

Interior Architecture services include:

- Space Planning
- Interior Design
- Execution Drawings
- Purchasing
- Artwork and Materials Selection
- Design Guidelines
- Facility Management
- Supervision or Construction Management

CHACCOUR CONSTRUCTION

LEBANON - KASLIK - AL MOUDABBER CENTER, Block B -2nd Floor- P.O. Box: 401 Zouk Mikael  
Tel : +961 9 210 893 - +961 9 211 401 Mob : +961 3 688 898 - +961 70 100 080 Fax: +961 9 211 410  
Email : info@chaccour-construction.com Website : www.chaccour-construction.com



# Landscape Architecture

---

- Architecture
- Structural & Civil Engineering
- Electro-mechanical Engineering
- Waste Water Treatment
- Construction Management
- Planning & Urban Design
- Interior Architecture
- **Landscape Architecture**
- Graphic Rendering
- Contracting

When tackling the natural, environmental, socio-cultural, and legal constraints, our architects use their knowledge and skills to accomplish the required technical and implementation drawings.

---

Landscape Architecture services include:

- Site Design
- Landscape Design
- Hardscape Design
- Water Feature Design
- Irrigation Systems Design
- Plant and Materials Selection
- Artwork and Sculpture Selection

CHACCOUR CONSTRUCTION

LEBANON - KASLIK - AL MOUDABBER CENTER, Block B -2nd Floor- P.O. Box: 401 Zouk Mikael  
Tel : +961 9 210 893 - +961 9 211 401 Mob : +961 3 688 898 - +961 70 100 080 Fax: +961 9 211 410  
Email : [info@chaccour-construction.com](mailto:info@chaccour-construction.com) Website : [www.chaccour-construction.com](http://www.chaccour-construction.com)



# Graphic Rendering

---

- Architecture
- Structural & Civil Engineering
- Electro-mechanical Engineering
- Waste Water Treatment
- Construction Management
- Planning & Urban Design
- Interior Architecture
- Landscape Architecture
- **Graphic Rendering**
- Contracting

For the enrichment of our graphic rendering, visualizing systems and skills are used. 3D is used for the recreation of walk-in tours, stills and to display the final project in its natural setting.

---

Graphic Rendering services include:

- 3D Computer Modeling
- Animation
- Renderings
- Multimedia
- Print Design/Brochures

CHACCOUR CONSTRUCTION

LEBANON - KASLIK - AL MOUDABBER CENTER, Block B -2nd Floor- P.O. Box: 401 Zouk Mikael  
Tel : +961 9 210 893 - +961 9 211 401 Mob : +961 3 688 898 - +961 70 100 080 Fax: +961 9 211 410  
Email : info@chaccour-construction.com Website : www.chaccour-construction.com



# Contracting

---

- Architecture
- Structural & Civil Engineering
- Electro-mechanical Engineering
- Waste Water Treatment
- Construction Management
- Planning & Urban Design
- Interior Architecture
- Landscape Architecture
- Graphic Rendering
- **Contracting**

We ensure the client with the highest standards of quality at the most competitive prices while providing turnkey construction projects.

Our experienced construction teams manage all phases of construction from demolition to architectural finishing and interior decoration.

---

Construction services include:

- Demolition
- Earth Moving
- Concrete
- Electro-Mechanical
- Architectural Finishing
- Interior Decoration
- Roads and Infrastructure

CHACCOUR CONSTRUCTION

LEBANON - KASLIK - AL MOUDABBER CENTER, Block B -2nd Floor- P.O. Box: 401 Zouk Mikael  
Tel : +961 9 210 893 - +961 9 211 401 Mob : +961 3 688 898 - +961 70 100 080 Fax: +961 9 211 410  
Email : [info@chaccour-construction.com](mailto:info@chaccour-construction.com) Website : [www.chaccour-construction.com](http://www.chaccour-construction.com)



# Portfolio



ARCHITECTURE, ENGINEERING & CONSTRUCTION MANAGEMENT

## ARCHITECTURE PROJECTS:

PROJECT	LOCATION	CATEGORY	AREA
Yenagoa Peace Park	Nigeria	Sports & Leisure	40.000 m <sup>2</sup>
Aqua Ibom Water Park and Dry Park	Nigeria	Sports & Leisure	45.000 m <sup>2</sup>
Akwa Ibom Complex - Hotel, Convention center , Mall	Uyo - Nigeria	Sports & Leisure	80.000 m <sup>2</sup>
Cite Du Basketeur	Ain Saadeh, Lebanon	Sports & Leisure	20.000 m <sup>2</sup>
Convention Center	Uyo - Nigeria	Sports & Leisure	16.000 m <sup>2</sup>
Ibom Tropicana Cineplex	Uyo - Nigeria	Sports & Leisure	5.000 m <sup>2</sup>
Nautical Stadium of “Epinay sur-seine ” in collaboration with bureau Kostanjevac	France	Sports & Leisure	110.000 m <sup>2</sup>
Lebanese Federation of Basketball- Basketball city	Ain Saadeh - Lebanon	Sports & Leisure	56.000 m <sup>2</sup>
Covered Swimming Pool College Saints Coeurs	Kfarehbab - Lebanon	Sports & Leisure	3.500 m <sup>2</sup>
Gymnasium College Saints Coeurs	Kfarehbab - Lebanon	Sports & Leisure	6.000 m <sup>2</sup>
Swimming Pool (1) Semi-Olympic with annexes Mont La Salle College	Lebanon	Sports & Leisure	4.500 m <sup>2</sup>
Children Oasis Mont la Salle College	Lebanon	Sports & Leisure	2.500 m <sup>2</sup>
Olympic Stadium Mont La Salle College with a football playground	Lebanon	Sports & Leisure	15.000 m <sup>2</sup>
Nautical Palace Mont La Salle College	Lebanon	Sports & Leisure	20.000 m <sup>2</sup>
Silverbird Convention Center	Nigeria	Sports & Leisure	15.000 m <sup>2</sup>
Jounieh Hospital	Jounieh - Lebanon	Hospitals & Clinics	9.000 m <sup>2</sup>
Health Complex: Hospital, Rest house, Retirement, Medical center, Hotel, tourism, Health center	Beirut - Lebanon	Hospitals & Clinics	60.000 m <sup>2</sup>
Cortbawi Hospital - Physiotherapy, Hydrotherapy, Electrotherapy and Orthopedic sugery	SS - CC Adma Lebanon	Hospitals & Clinics	17.000 m <sup>2</sup>
Socio-Medical & Technical complexes for the Cortbawi institute - Hospital for handicaps	Daher El Wahch	Hospitals & Clinics	32.000 m <sup>2</sup>
SAQR Hospital	Ras El Khayma - U.A.E	Hospitals & Clinics	45.000 m <sup>2</sup>
Dubai German Hospital - 300 beds	Dubai	Hospitals & Clinics	45.000 m <sup>2</sup>
UN-Irish Field Hospital	Southern - Lebanon	Hospitals & Clinics	1.000 m <sup>2</sup>
El Abiad 952	Dbayeh - Lebanon	Commercial & Business	16.000 m <sup>2</sup>
Abuja Downtown - Residential Commercial & Leisure complex	Abuja – Nigeria	Commercial & Business	268.000 m <sup>2</sup>
lee France	France	Commercial & Business	6.000 m <sup>2</sup>
Yenagoa Megapark Mall	Bayelsa State - Nigeria	Commercial & Business	18.000 m <sup>2</sup>
Tele Liban	Beirut - Lebanon	Commercial & Business	6.000 m <sup>2</sup>
Silverbird Treasure Cove Mall - Entertainment & Commercial Center, Mall, 23 Cinemas	Lagos - Nigeria	Commercial & Business	60.000 m <sup>2</sup>
Moulin D'or	Lebanon	Commercial & Business	800 m <sup>2</sup>
Lekki Tv Station	Lekki - Nigeria	Commercial & Business	4.000 m <sup>2</sup>
Erbil Business Tower	Erbil	Commercial & Business	12.000 m <sup>2</sup>
Prototype Mall (More than 20 locations)- Entertainment & Commercial Center, Mall, 6 Cinemas	Nigeria	Commercial & Business	8.500 & 6.500 m <sup>2</sup>
Galaxy World Trade Center	Beirut - Lebanon	Commercial & Business	55.000 m <sup>2</sup>



PROJECT	LOCATION	CATEGORY	AREA
International Business Center I.B.C	Achrafieh - Beirut	Commercial & Business	40.000 m <sup>2</sup>
Jeddah Complex	Jeddah	Commercial & Business	200.000 m <sup>2</sup>
Abuja City Mall	Abuja – Nigeria	Commercial & Business	48.181 m <sup>2</sup>
Kaslik Etoile	Kaslik - Lebanon	Commercial & Business	10.200 m <sup>2</sup>
Abuja Commercial And Leisure Complex	Abuja – Nigeria	Commercial & Business	203.306 m <sup>2</sup>
Ecobat	Beirut - Lebanon	Commercial & Business	2.000 m <sup>2</sup>
Achrafieh Center	Beirut - Lebanon	Commercial & Business	4.300 m <sup>2</sup>
Khalil Tawil Center	Byblos - Lebanon	Commercial & Business	6.000 m <sup>2</sup>
Al Moudabber Center - Kaslik Block A & Block B	Kaslik - Lebanon	Commercial & Business	27.000 m <sup>2</sup>
Dora Gate Center	Dora - Beirut	Commercial & Business	6.000 m <sup>2</sup>
Adwan Center	Sin El Fil - Lebanon	Commercial & Business	5.000 m <sup>2</sup>
Pearl Center	Kaslik - Lebanon	Commercial & Business	7.000 m <sup>2</sup>
Lagos Deep Water Shore Base & Medical Facility	Nigeria	Ports & Heliports	16.125 m <sup>2</sup>
Villa Saad - Ain Saadeh	Beirut - Lebanon	Private Residences	3.000 m <sup>2</sup>
Hanna residence - Akkar	Akkar - Lebanon	Private Residences	2.000 m <sup>2</sup>
Faqra Chalet	Faqra - Lebanon	Private Residences	800 m <sup>2</sup>
Villa C	Fatka- Lebanon	Private Residences	600 m <sup>2</sup>
Villa Moukarem	Lebanon	Private Residences	1.400 m <sup>2</sup>
Villa Makdessi	Fatka- Lebanon	Private Residences	2.200 m <sup>2</sup>
Villa Lichaa Fatka	Fatka- Lebanon	Private Residences	2.000 m <sup>2</sup>
Villa Hany - Adma	Adma - Lebanon	Private Residences	2.000 m <sup>2</sup>
Villa Chaccour	Fatka- Lebanon	Private Residences	1.200 m <sup>2</sup>
Villa Adma 842	Adma - Lebanon	Private Residences	3.000 m <sup>2</sup>
Villa Adma 339	Adma - Lebanon	Private Residences	2.000 m <sup>2</sup>
Hanna Residence - Fatka	Fatka - Lebanon	Private Residences	3.500 m <sup>2</sup>
Sopic Adma Apartment	Adma - Lebanon	Private Residences	600 m <sup>2</sup>
Nawfal Residence - Zouk	Zouk Michael - Lebanon	Private Residences	2.000 m <sup>2</sup>
Kfarzibian 6899	Kfarzibian - Lebanon	Private Residences	1.000 m <sup>2</sup>
Ikoyi Duplex - Nigeria	Nigeria	Private Residences	1.600 m <sup>2</sup>
Bzebdine 2040	Bzebdine - Lebanon	Private Residences	1.000 m <sup>2</sup>
Zahleh Church	Zahleh - Lebanon	Religious	4.000 m <sup>2</sup>
St Charbel Church	Lebanon	Religious	1.000 m <sup>2</sup>
Ain Saadeh Church	Ain Saadeh - Lebanon	Religious	1.400 m <sup>2</sup>
Geahchan Building	Achrafieh - Lebanon	Residential Buildings	9.000 m <sup>2</sup>
Beirut Diamond 612	Achrafieh - Lebanon	Residential Buildings	9.000 m <sup>2</sup>

PROJECT	LOCATION	CATEGORY	AREA
Esla 2465	Achrafieh - Beirut	Residential Buildings	8.400 m <sup>2</sup>
Arcadis 730	Achrafieh Rmeil – Beirut	Residential Buildings	3.000 m <sup>2</sup>
Esla 524	Beirut - Lebanon	Residential Buildings	9.000 m <sup>2</sup>
House of Youth and Culture Library, Projection Room, Research Center	Zouk Michael - Lebanon	Residential Buildings	1.000 m <sup>2</sup>
Achrafieh 1222-778	Achrafieh - Beirut	Residential Buildings	6.000 m <sup>2</sup>
Esla 485	Hazmieh - Lebanon	Residential Buildings	4.000 m <sup>2</sup>
Bayo Kuku	Nigeria	Residential Buildings	9.000 m <sup>2</sup>
Ocean Breeze	Lagos - Nigeria	Residential Buildings	30.000 m <sup>2</sup>
Esla 126 - Luxurious apartments & boutiques, restaurants, coffee shops	Achrafieh - Beirut	Residential Buildings	9.000 m <sup>2</sup>
Eden Gardens 1818	Ain Saadeh - Lebanon	Residential Buildings	8.000 m <sup>2</sup>
Ramlet El Baida	Lebanon	Residential Buildings	10.500 m <sup>2</sup>
Ain Saadeh 1820	Ain Saadeh - Mount Lebanon	Residential Buildings	9.000 m <sup>2</sup>
Kornet Chehwan - 3043	Kornet chehwan – Mount Lebanon	Residential Buildings	4.000 m <sup>2</sup>
Ikoyi - Luxurious apartments & a private residence	Ikoyi - Nigeria	Residential Buildings	18.000 m <sup>2</sup>
Esla Sin El Fil	Sin El Fil - Lebanon	Residential Buildings	8.400 m <sup>2</sup>
Ballouneh 1363	Ballouneh – Mount Lebanon	Residential Buildings	2.000 m <sup>2</sup>
Queen's Drive	Lagos – Nigeria	Residential Buildings	9.000 m <sup>2</sup>
Golden Sands	Lagos – Nigeria	Residential Buildings	27.500 m <sup>2</sup>
Lagos Residences	Lagos – Nigeria	Residential Buildings	18.000 m <sup>2</sup>
Roof Bay Village - Adma	Fatka- Lebanon	Residential Villages	14.000 m <sup>2</sup>
Jasmine Valley - Ain Dara	Ain Dara - Lebanon	Residential Villages	40.000 m <sup>2</sup>
Ain Dara Resort	Ain Dara - Lebanon	Residential Villages	32.000 m <sup>2</sup>
Al Rawabi Village - 230 Apartments	Dbayeh - Lebanon	Residential Villages	30.000 m <sup>2</sup>
Al Manar Village - 245 Touristic & Residential Lodgings	Raboueh - Lebanon	Residential Villages	60.000 m <sup>2</sup>
Abuja Ambassadorial Galaxy - 400 Apartments	Abuja – Nigeria	Residential Villages	205.000 m <sup>2</sup>
New Ain Saadeh Village - 600 Apartments	Ain Saadeh - Lebanon	Residential Villages	146.000 m <sup>2</sup>
Stayhat Adma Village (42 Villas)	Adma - Lebanon	Residential Villages	28.600 m <sup>2</sup>
Ponticelli France - Port Hartcourt (Compound for Engineers)	Port Hartcourt - Nigeria	Residential Villages	9.000 m <sup>2</sup>
Ocean Breeze	Lagos - Nigeria	Residential Villages	18.000 m <sup>2</sup>
Monteverde Village 2202	Monteverde - Lebanon	Residential Villages	58.000 m <sup>2</sup>
Monte Byblos Village	Byblos - Lebanon	Residential Villages	490.000 m <sup>2</sup>
Intertransport Center S.P.A - Interland Angloa 672 Housing Units	Interland - Angola	Residential Villages	82.000 m <sup>2</sup>
Elf Total Compound - New Village , Port Hartcourt	Port Hartcourt Nigeria	Residential Villages	140.000 m <sup>2</sup>
Daychounieh 130-131	Daychounieh - Mount Lebanon	Residential Villages	71.000 m <sup>2</sup>
New Kfarehbab Village	Kfarehbab - Lebanon	Residential Villages	32.000 m <sup>2</sup>

PROJECT	LOCATION	CATEGORY	AREA
Bens Tower		Towers & Hotels	154.000 m <sup>2</sup>
Stratosphere Hotel	Abuja	Towers & Hotels	180.000 m <sup>2</sup>
Lebanese Expatriates' House	Beirut - Lebanon	Towers & Hotels	40.000 m <sup>2</sup>
Erbil Business Tower	Erbil	Towers & Hotels	12.000 m <sup>2</sup>
Hyatt Place Hotel - Nigeria- IBOM Tropicana , 5* Hotels , 230 Rooms	Nigeria	Towers & Hotels	30.000 m <sup>2</sup>
Hyatt Abuja Hotel - 64 Stories , 5* Hotel & Luxurious apartments	Abuja Stratosphere - Nigeria	Towers & Hotels	156.000 m <sup>2</sup>
Victoria Island Business Tower	Victoria Island - Lagos	Towers & Hotels	24.000 m <sup>2</sup>
Monte Byblos Hotel -	Byblos - Lebanon	Towers & Hotels	20.000 m <sup>2</sup>
Business Suites Hotel - International Business Center Project	Achrafieh - Lebanon	Towers & Hotels	12.000 m <sup>2</sup>
International Business Tower - 80 Floors	Dubai	Towers & Hotels	200.000 m <sup>2</sup>
Asaba World Hotel - 5* Hotel , 200 Rooms	Nigeria	Towers & Hotels	30.000 m <sup>2</sup>
Abuja Down Town - 5* Hotel	Nigeria	Towers & Hotels	20.000 m <sup>2</sup>
Tamer Land Hotel	Faraya - Lebanon	Towers & Hotels	6.000 m <sup>2</sup>
Le Parrain Hotel	Faraya - Lebanon	Towers & Hotels	15.000 m <sup>2</sup>
Century Park Hotel	Kaslik - Lebanon	Towers & Hotels	27.000 m <sup>2</sup>
Verbus System Hotel	Calabar - Nigeria	Towers & Hotels	26.000 m <sup>2</sup>
Treasure Cove Hotel (Family Hotel)	Lagos - Nigeria	Towers & Hotels	23 000 m <sup>2</sup>
Showtime Silverbird Hotel	Port Harcourt – Rivers State	Towers & Hotels	20.000 m <sup>2</sup>
Mouka Twin Towers	Lagos - Nigeria	Towers & Hotels	18.000 m <sup>2</sup>
Jeddah Towers	Saudi Arabia	Towers & Hotels	140.000 m <sup>2</sup>
Ibom Tropicana Hotel	Uyo - nigeria	Towers & Hotels	30 000 m <sup>2</sup>
Hyatt Place Hotel	UYO state	Towers & Hotels	180.000 m <sup>2</sup>
The Stratosphere	Abuja	Towers & Hotels	140.000 m <sup>2</sup>
Nursery School 'Soeurs Antonines'	Bhamdoun - Lebanon	Education	2.000 m <sup>2</sup>
Complementary School 'Soeurs Antonines'	Bhamdoun - Lebanon	Education	4.000 m <sup>2</sup>
SS-CC-Cortbawi - Institute - Hotel Management School & Faculty	Adma - Lebanon	Education	3.600 m <sup>2</sup>
Technical and Professional School "Federation of Keserwan municipalities"	Jouret El Termous - Lebanon	Education	9.000 m <sup>2</sup>
Mont la Salle College - Extension for Children Leisure , Kindergarden , Sport Palace	Ain Saadeh - Lebanon	Education	3.000 m <sup>2</sup>
Extension of College des Saints Coeurs	Kfarehbab - Lebanon	Education	15.541 m <sup>2</sup>
Physical Medicine Faculty Cortbawi	Adma - Lebanon	Education	30.000 m <sup>2</sup>
Technical School Cortbawi	Adma - Lebanon	Education	25.000 m <sup>2</sup>
Two Prefabrication Factories (Concrete Panels System)	Ras El Khaymeh - U.A.E	Factories	12.000 m <sup>2</sup>
Gaylani Plastic	Baghdad - Iraq	Factories	20.000 m <sup>2</sup>
Industrial Complex for Tiles, Polyurethane, Ducts, Wood	Ras El Khaymeh - U.A.E	Factories	4.000 m <sup>2</sup>
Claudius Nasr Steel Factory	Kfarchima - Lebanon	Factories	10.500 m <sup>2</sup>

PROJECT	LOCATION	CATEGORY	AREA
Chehab Factory	Debbieh - Lebanon	Factories	11.000 m <sup>2</sup>
Tyrolite Factory	Debbieh - Lebanon	Factories	2.000 m <sup>2</sup>
Various Factory	Debbieh - Lebanon	Factories	5.000 m <sup>2</sup>
Convertex Factory	Naameh - Lebanon	Factories	13.000 m <sup>2</sup>
Fares Farm	Chouf - Lebanon	Farms	3.000 m <sup>2</sup>
Abi Nader Farm	Zebdine - Lebanon	Farms	8.000 m <sup>2</sup>
Technical School	Tripoli - Lebanon	Rehabilitation	9.000 m <sup>2</sup>
Technical School	Ajaltoun - Lebanon	Rehabilitation	21.000 m <sup>2</sup>
Technical School	Douma - Lebanon	Rehabilitation	7.000 m <sup>2</sup>
Technical School	Batroun - Lebanon	Rehabilitation	22.000 m <sup>2</sup>
Technical School	Deir Ammar - Lebanon	Rehabilitation	8.000 m <sup>2</sup>
Technical School	Zgharta - Lebanon	Rehabilitation	6.000 m <sup>2</sup>
Technical school	Daher El Wahch - Lebanon	Rehabilitation	32.000 m <sup>2</sup>
Socio-Medical and Technical Complex- Cortbawi Institute	Adma - Lebanon	Rehabilitation	41.000 m <sup>2</sup>
Sagesse Scholastic Complex	Hadath - Lebanon	Rehabilitation	26.000 m <sup>2</sup>
Studies Of The Fuel Tanks For The Cement Factory - C/O Nasr Factory	Chekka - Lebanon	Metallic Constructions	6.000 m <sup>2</sup>
Tyrolite Factory And Mechanical Workshop	Debbieh - Lebanon	Metallic Constructions	3.000 m <sup>2</sup>
Claudius Nasr factory	Kfarchima - Lebanon	Metallic Constructions	10.500 m <sup>2</sup>
Office Buildings- Metallic structure- Facades in precast reinforced concrete	UAE	Metallic Constructions	15.000 m <sup>2</sup>
2 Prefabrications Factories	UAE	Metallic Constructions	12.000 m <sup>2</sup>
Polyurethane Factory For Insulation	UAE	Metallic Constructions	3.000 m <sup>2</sup>
Tiles factory Duct factory for A/C	Ras El Khaymeh - U.A.E	Metallic Constructions	7.000 m <sup>2</sup>

#### INTERIOR PROJECTS:

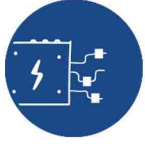
PROJECT	LOCATION	CATEGORY	AREA
Swimming Pool (2) Mont La Salle College	Lebanon	Interior Projects	
Dr. Arbid Plastic Surgery Clinic	Lebanon	Hospitals & Clinics	
Dubai German Hospital	Dubai	Hospitals & Clinics	
Wakim Group Dentistry	Lebanon	Hospitals & Clinics	
Design Office	Lebanon	Hotels & Offices	
Kaslik Offices	Lebanon	Hotels & Offices	
Regency Palace Hotel	Lebanon	Hotels & Offices	
Convention Center	Nigeria	Commercial & Business	
Treasure Cove Mall	Nigeria	Commercial & Business	
Ibom Tropicana Mall	Uyo - Nigeria	Commercial & Business	

PROJECT	LOCATION	CATEGORY	AREA
Deli Shop - Jeita	Lebanon	Commercial & Business	
Dakroub House	Lebanon	Private Residences	
Beirut Apartment	Lebanon	Private Residences	
Beirut Terraces Apartment	Lebanon	Private Residences	
Villa Adma 842	Lebanon	Private Residences	
Sunken Round Sitting	Lebanon	Private Residences	
Restoration Of Raymond House Adma Lebanon	Lebanon	Private Residences	
Nassour Residence	Lebanon	Private Residences	
Makdessi Residence	Lebanon	Private Residences	
Matar Living	Lebanon	Private Residences	
Kfarzibian Villa	Lebanon	Private Residences	
Duplex - Beirut	Lebanon	Private Residences	
Living room - Faraya	Lebanon	Private Residences	
Master Bedroom - Faraya	Lebanon	Private Residences	
Rabieh Living area	Lebanon	Private Residences	
Rabieh Sitting Room	Lebanon	Private Residences	
Villa - Adma	Lebanon	Private Residences	
Chalet Faraya - Living	Lebanon	Private Residences	
Haddad Residence	Lebanon	Private Residences	
Villa C- Fataa	Lebanon	Private Residences	
Georges Abi Rizk Residence	Lebanon	Private Residences	
Dayyoub House	Lebanon	Private Residences	
Ben's House	Lebanon	Private Residences	
Vanity	Lebanon	Product Design	
Long Chair	Lebanon	Product Design	
Desk	Lebanon	Product Design	
Coffee Table	Lebanon	Product Design	
Interior Portfolio Scene 08-Pub	Lebanon	Restaurants & Pubs	
Zanini Italian Restaurant	Andrea Zanini Sorouh Tower- Abu Dhabi UAE	Restaurants & Pubs	
Zanini Burj Restaurant	Burj Khalifa - Dubai	Restaurants & Pubs	
Minis Restaurant - Bliss	Lebanon	Restaurants & Pubs	
Lebanese House Restaurant	Sorouh Tower - Abu Dhabi UAE	Restaurants & Pubs	
Tele Liban - Morning Show	Lebanon	Tv Stations & Studios	
Tele Liban - Sports News	Lebanon	Tv Stations & Studios	
Tele Liban - News Stand	Lebanon	Tv Stations & Studios	

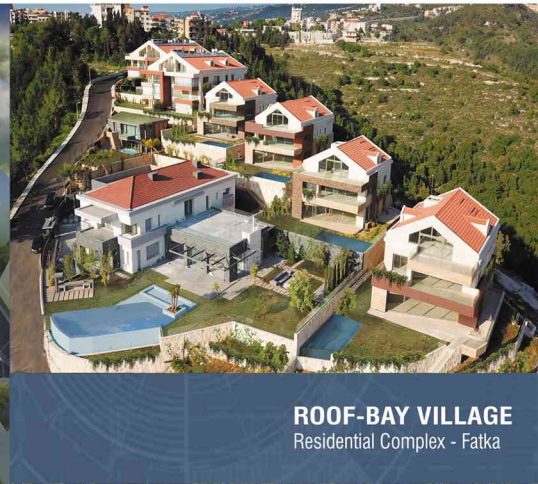


# Featured





**L.I.B.C**  
Expatriat's house - Beirut



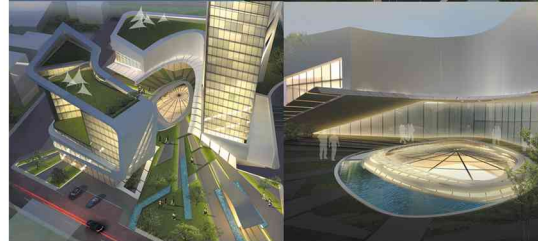
**ROOF-BAY VILLAGE**  
Residential Complex - Fatka



**ACHRAFIEH 612**  
Residential Tower - Beirut



**STRATOSPHERE**  
Hyatt Regency Hotel - Abuja



**DBAYEH 952**  
El-Abiad Commercial & Entertainment Center - Lebanon



**IBOM CONVENTION CENTER**  
Convention Center - Uyo state



**VICTORIA ISLAND**  
Business Center



**ERBIL 101**  
Business Center - Erbil





**AIN SAADE 1818**  
Ain Saade - Lebanon

**IBOM TROPICANA MALL**  
Akwa Ibom



**IKOYI**  
Residential Building - Lagos



**ESLA 126**  
Residential Building - Beirut



**AIN SAADE 98**  
Private villa - Lebanon



**KASSOUF BUILDING**  
Residential Building - Lebanon



**FAQRA 6899**  
Private villa - Faqra Lebanon



**BAYO KUKU**  
Residential Building - Nigeria



**H.E.C ACHRAFIEH 1222**  
Residential Building - Achrafieh



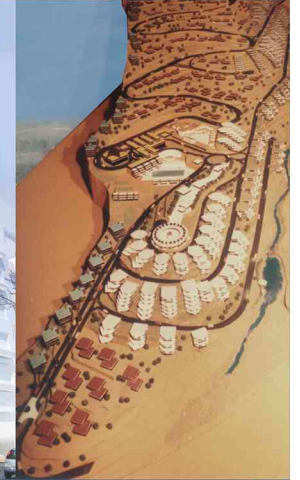
**ESLA 2465**  
Residential Building - Beirut



**ESLA 524**  
Residential Tower - Beirut

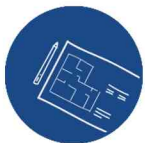
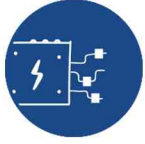


**ARCADIS 730**  
Residential Building - Lebanon



**MONTE BYBLOS**  
Residential Complex - Lebanon





**HYATT PLACE HOTEL**  
Hotel Uyo - Nigeria



**CORTBAWI**  
Hospital, Technical School & City Complex - Lebanon



**JASMINE VALEY**  
Eco Resort - Ain dara Lebanon



**JEDDAH COMPLEX**  
Hotel, Business Center & Mall



**ESLA 485**  
Residential Building - Hazmieh



**TREASURE COVE**  
Mall & Leisure Complex



**BASKETBALL CITY**  
Sports Complex - Lebanon



**H.E.C AIN SAADE 1820**  
Residential Buildings - Lebanon



**MALL PROTOTYPE**  
Nigeria



**PONTICELLI**  
Compound - Port Harcourt



**ABUJA DOWNTOWN**  
Mall, Residential & Leisure Complex





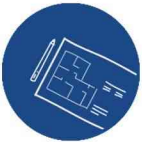
**Lebanon, Kaslik Al Moudabber Center, Block B, 2nd Floor**



**P.O. Box 401 Zouk Mikael**



**M +961 3 688 898 | +961 70 100 080**



**E [info@chaccour-construction.com](mailto:info@chaccour-construction.com)**

